



NGTouch thermostats



Heat Mat

Underfloor Heating

Call 01444 247020
to find out more or
visit our website at
www.heatmat.co.uk

NGTouch Thermostat

Electronic colour touchscreen thermostat/timer

Heat Mat's exclusive NGTouch thermostat is a simple to use colour, touchscreen electric underfloor heating thermostat, ideal for controlling any of Heat Mat's electric underfloor heating or other manufacturer's systems.

This thermostat is the latest model in Heat Mat's popular NGT range, and like all other Heat Mat thermostats, it is manufactured in Denmark in collaboration with OJ Electronics.

The NGTouch provides fully-automated and flexible underfloor heating control to suit the owner's daily schedule. The simple touchscreen interface and menu navigation structure are easy to use. The thermostat is supplied with various lifestyle modes including holiday, comfort, frost protection and boost for an hour of full-power warmth.

NGTouch screens

Available in white or silver with standard or premium frames

Home screen



NGT-2.0-STND in Silver

Mode screen



NGT-2.0-STND in White

The NGTouch allows different week types to be programmed depending on the owner's routine. Each day is split into distinct 'events' allowing the homeowner to create a personalised heating schedule.

This intelligent thermostat has energy-saving features including an Eco mode and energy-monitoring data graphs allowing the owner to keep track of their electricity consumption on a weekly, monthly or annual basis.

Another intelligent feature is the 'Adaptive Function' designed to learn the heat characteristics of a room and turn the underfloor heating on before an event, to ensure the system is operating at maximum efficiency.

The NGTouch can also be operated in manual mode, by simply increasing or decreasing the temperature using arrows on screen.

NGTouch features

- Easy to use, quick to navigate
- Fast reacting screen - uses a premium processor
- Full colour resistive touchscreen
- Available in white or silver with the option to upgrade to a premium frame in various finishes
- Features four lifestyle modes
- See energy use over a week, a month or a year
- Monitor energy use in kW and £'s
- Switch the thermostat to manual for the simplest control
- Download diagnostic data using a QR code for technical support
- Exclusive to Heat Mat
- Floor and room sensors
- Controls up to 16 Amp of underfloor heating directly without the need for a contactor
- Made in Denmark
- Covered by a Lifetime Warranty

Compatible with



Heating mats



Undertile heating cables



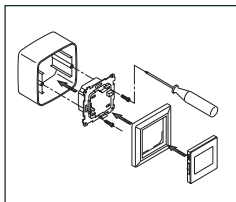
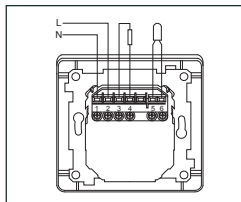
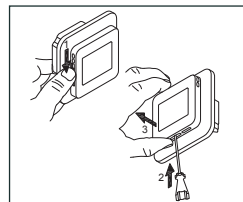
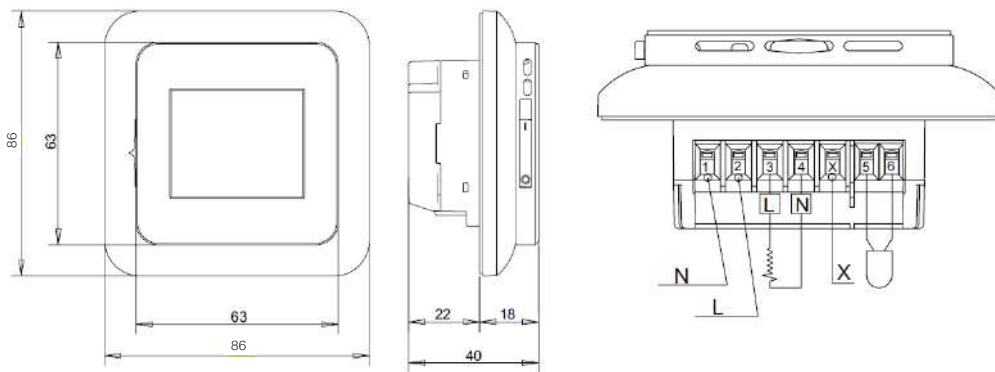
FlexHeat cables



5mm heating cables in screed



Underlamine heating mats



NTC 12K Ω @ 25° Celsius		
°Celsius	°Fahrenheit	Ω Ohm
-10° C	14° F	63929 Ω
0° C	32° F	37942 Ω
10° C	50° F	23364 Ω
20° C	68° F	14871 Ω
30° C	86° F	9752 Ω

Lifestyle Modes

The thermostat offers a number of lifestyle 'modes' for easy temperature control. These modes are accessed via the Mode menu on the home screen and include: Comfort, Boost, Frost Protection, Holiday and Eco (found in the Advanced Options menu).

Comfort mode - This will override the current heating program and allow manual adjustment of the target temperature for up to 24 hours.

Boost mode - the underfloor heating is boosted to full power. After one hour, the thermostat returns to the 'default schedule' or programmed operation.

Frost protection mode - used when heating is not needed but the temperature must be kept above freezing.

Holiday mode - this allows the heating to be set to a minimum while the homeowner is away on holiday, saving both energy and money.

Heating Schedule

The thermostat comes with a pre-programmed 'event' schedule for easy and economic heating control.

Eco mode and energy efficiency

Eco Mode reduces the energy spent on unnecessary

heating if a room or house is temporarily vacated during a scheduled heating event, or a homeowners routine is interrupted.

Adaptive function

Adaptive function remembers the heat characteristics of rooms and adjusts the thermostat accordingly, to bring the room up to temperature for the start of each programmed event. After a few days, the adaptive function will have automatically calculated when the heating must be turned on/off to achieve this and it will adapt with the seasons to ensure the system runs efficiently. If enabled, adaptive function will be active prior to every event to reach the target temperature.

QR data for technical support

The NGTouch has a diagnostic function for use with smartphones. The thermostat provides a QR read-out of each individual thermostat's technical data to provide energy usage graphs and diagnostic assistance.

Classification

Protection from electric shock must be assured by appropriate installation. Appropriate installation must meet the requirements of Class II (enhanced insulation).



NGTouch QR Data
can be viewed on a smartphone

NGTouch Underfloor Heating Thermostat Technical Specification

Supply Voltage	100-240 V AC + 10% 50/60Hz
Output relay	Max 16A, make contact SPST - NO
Interrupter	2-pole, 16A
Temperature range	+5 / +40°C
Floor limit range	+5 / +40°C
Heating schedule	4- or 6-event program
Wireless	No
Battery backup	5 years
Ambient temperature	0/+40°C during operation
On/Off differential	0.4°C
Regulation principle	PWM/PL
Housing	IP21
External sensor type	NTC (12 K Ω) 3m
Dimensions (H/W/D)	82/82/40mm (23mm depth)
Display	176x220 pixel TFT – Resistive touch
EU registered design	DM/082270
Approvals	CE, VDE, BEAB, NEMKO, UKCA

Wiring

Heating mats must always be controlled by a suitable electric underfloor heating thermostat with floor temperature limitation. Heat Mat thermostats are rated to 16 Amps, and if a system exceeds this loading a suitably rated contactor should be used. The circuit must be protected by a 30mA RCD and suitably rated fuse or circuit breaker.



About Heat Mat

Heat Mat is part of the Heatcom group of companies, one of Europe's largest underfloor heating manufacturers. With Heat Mat's 25 years' experience of the UK underfloor heating market and a wealth of knowledge on Scandinavian ice and snow melting systems, you can rely on Heat Mat to understand your needs and supply the products to satisfy your requirements.

This is why we are the Professionals' Choice, the number one supplier of electric underfloor heating and ice and snow melting systems to the UK's professional installation market.

Contact us

01444 247020
tech@heatmat.co.uk www.heatmat.co.uk

Heat Mat Limited
3 Danworth Farm, Cuckfield Road,
Hurstpierpoint, West Sussex, BN6 9GL.



To see all of our products use your
smart phone to scan this code.

